

Reversible Hardware Molded D-sub Cable, DB9 Male / Female, 25 ft


Features for this product

- Reversible mating hardware allows application flexibility and panel mounting
- Wired straight through to connect many serial devices/peripherals
- 360 degree fully shielded for protection against EMI/RFI
- Gold plated contacts provide reliable connections with repeated mating cycles
- DB9 male to female connectors; lengths range from 2.5 ft to 25ft; color is light gray

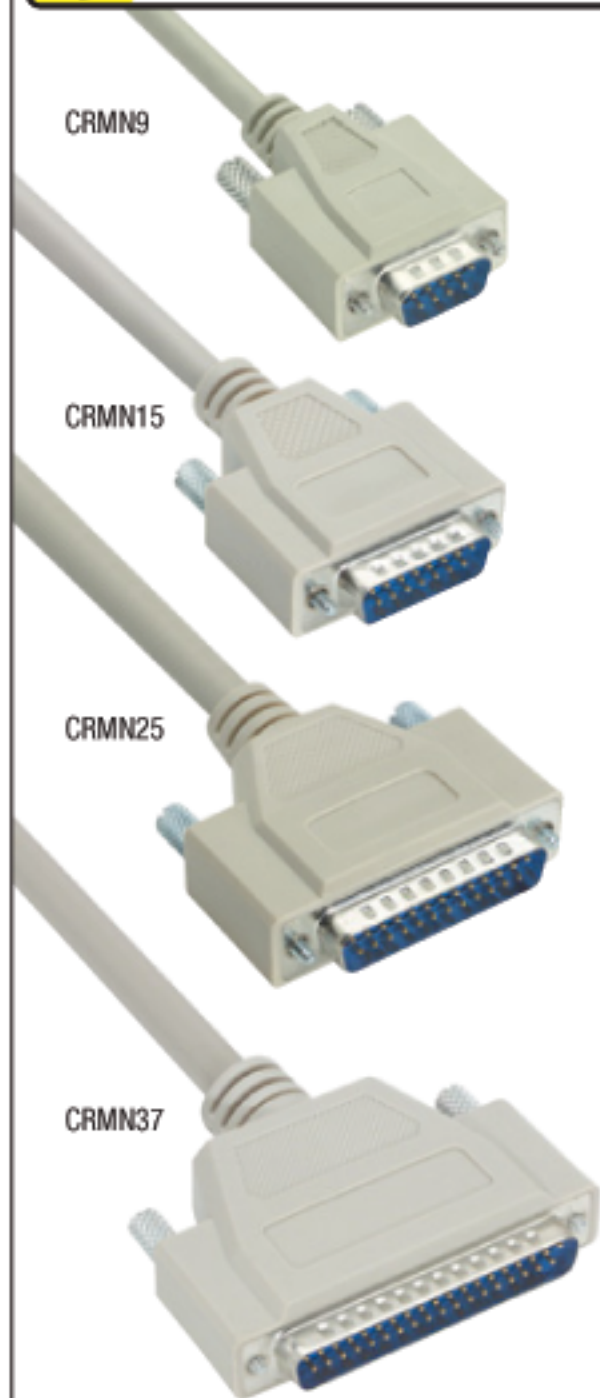


L-com's exclusive CRMN family of D-sub cable assemblies feature connectors with threaded inserts. This allows either metal thumbscrews or female hex standoffs to be threaded securely to each connector resulting in more flexibility to interface to ports or panel mounting the cable directly without use of an adapter. Fully shielded throughout the entire cable to prevent against data corrupting EMI/RFI. Molded backshells provide superior strain relief while robust 26 AWG conductors are wired straight through for ease of compatibility. Will ship immediately if in stock.

Details for this D-Subminiature product

L-com Item #	CRMN9MF-25
Manufacturer	L-com
UPC #	822335012172
RoHS Status	RoHS Compliant 

L-com Exclusive



Comes complete with male and female 4-40 hardware.

STEP 1



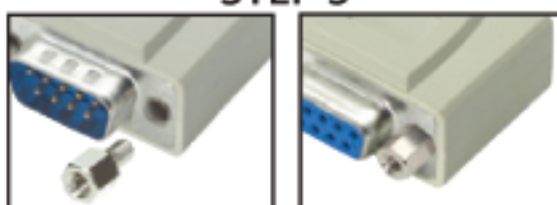
This cable is shipped with male knurled thumbscrews regardless of D-Sub gender.

STEP 2



If you need a Female fastening system, simply unscrew the knurled thumbscrew.

STEP 3



Then: install (thread) hex jack screws provided with an instruction sheet.

STEP 4



To install your cable on a panel it should be no thicker than 0.062". Simply follow step 2. Provide proper panel opening, install the hex jack screw and tighten.

Item #	Description
--------	-------------

Data Cables - With Reversible Hardware to Mate Any Serial Cables or Mount on Panels

L-com is proud to offer an **exclusive family** of D-Sub data cables featuring user defined mounting hardware. Each cable end is capable of being connected with either male jack screws or female hex standoffs regardless of D-Sub gender. This capability allows a user much more flexibility to interface ports with opposite gender hardware. A by-product feature is to use the same cable with the male or female connector end mounted on a panel. No other standard off-the-shelf cable has this capability. The secret is in the kit of four custom hex standoffs that are included with each cable assembly. The specially made cable readily accepts these hex standoffs mounting on panels no thicker than 0.062".

Reversing Hardware 9 Pin D-Sub Cables - Are Shielded and Fully Populated

CRMN9MM-2.5	Reversible Hardware Molded Cable, DB9 Male / Male, 2.5 ft
CRMN9MM-	Reversible Hardware Molded Cable, DB9 Male / Male, 5.0 ft
CRMN9MM-10	Reversible Hardware Molded Cable, DB9 Male / Male, 10.0 ft
CRMN9MM-15	Reversible Hardware Molded Cable, DB9 Male / Male, 15.0 ft
CRMN9MM-25	Reversible Hardware Molded Cable, DB9 Male / Male, 25.0 ft
CRMN9MF-2.5	Reversible Hardware Molded Cable, DB9 Male / Female, 2.5 ft
CRMN9MF-5	Reversible Hardware Molded Cable, DB9 Male / Female, 5.0 ft
CRMN9MF-10	Reversible Hardware Molded Cable, DB9 Male / Female, 10.0 ft
CRMN9MF-15	Reversible Hardware Molded Cable, DB9 Male / Female, 15.0 ft
CRMN9MF-25	Reversible Hardware Molded Cable, DB9 Male / Female, 25.0 ft
CRMN9FF-2.5	Reversible Hardware Molded Cable, DB9 Female / Female, 2.5 ft
CRMN9FF-5	Reversible Hardware Molded Cable, DB9 Female / Female, 5.0 ft
CRMN9FF-10	Reversible Hardware Molded Cable, DB9 Female / Female, 10.0 ft
CRMN9FF-15	Reversible Hardware Molded Cable, DB9 Female / Female, 15.0 ft
CRMN9FF-25	Reversible Hardware Molded Cable, DB9 Female / Female, 25.0 ft

Reversing Hardware 15 Pin D-Sub Cables - Are Shielded and Fully Populated

CRMN15MM-2.5	Reversible Hardware Molded Cable, DB15 Male / Male, 2.5 ft
CRMN15MM-5	Reversible Hardware Molded Cable, DB15 Male / Male, 5.0 ft
CRMN15MM-10	Reversible Hardware Molded Cable, DB15 Male / Male, 10.0 ft
CRMN15MM-15	Reversible Hardware Molded Cable, DB15 Male / Male, 15.0 ft
CRMN15MF-2.5	Reversible Hardware Molded Cable, DB15 Male / Female, 2.5 ft
CRMN15MF-5	Reversible Hardware Molded Cable, DB15 Male / Female, 5.0 ft
CRMN15MF-10	Reversible Hardware Molded Cable, DB15 Male / Female, 10.0 ft
CRMN15MF-15	Reversible Hardware Molded Cable, DB15 Male / Female, 15.0 ft
CRMN15FF-2.5	Reversible Hardware Molded Cable, DB15 Female / Female, 2.5 ft
CRMN15FF-5	Reversible Hardware Molded Cable, DB15 Female / Female, 5.0 ft
CRMN15FF-10	Reversible Hardware Molded Cable, DB15 Female / Female, 10.0 ft
CRMN15FF-15	Reversible Hardware Molded Cable, DB15 Female / Female, 15.0 ft

Reversing Hardware 25 Pin D-Sub Cables - Are Shielded and Fully Populated

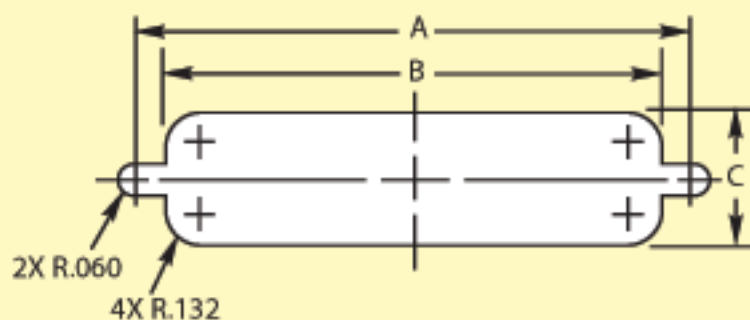
CRMN25MM-2.5	Reversible Hardware Molded Cable, DB25 Male / Male, 2.5 ft
CRMN25MM-5	Reversible Hardware Molded Cable, DB25 Male / Male, 5.0 ft
CRMN25MM-10	Reversible Hardware Molded Cable, DB25 Male / Male, 10.0 ft
CRMN25MM-15	Reversible Hardware Molded Cable, DB25 Male / Male, 15.0 ft
CRMN25MM-25	Reversible Hardware Molded Cable, DB25 Male / Male, 25.0 ft
CRMN25MF-2.5	Reversible Hardware Molded Cable, DB25 Male / Female, 2.5 ft
CRMN25MF-5	Reversible Hardware Molded Cable, DB25 Male / Female, 5.0 ft
CRMN25MF-10	Reversible Hardware Molded Cable, DB25 Male / Female, 10.0 ft
CRMN25MF-15	Reversible Hardware Molded Cable, DB25 Male / Female, 15.0 ft
CRMN25MF-25	Reversible Hardware Molded Cable, DB25 Male / Female, 25.0 ft
CRMN25FF-2.5	Reversible Hardware Molded Cable, DB25 Female / Female, 2.5 ft
CRMN25FF-5	Reversible Hardware Molded Cable, DB25 Female / Female, 5.0 ft
CRMN25FF-10	Reversible Hardware Molded Cable, DB25 Female / Female, 10.0 ft
CRMN25FF-15	Reversible Hardware Molded Cable, DB25 Female / Female, 15.0 ft
CRMN25FF-25	Reversible Hardware Molded Cable, DB25 Female / Female, 25.0 ft

Reversing Hardware 37 Pin D-Sub Cables - Are Shielded and Fully Populated

CRMN37MM-2.5	Reversible Hardware Molded Cable, DB37 Male / Male, 2.5 ft
CRMN37MM-5	Reversible Hardware Molded Cable, DB37 Male / Male, 5.0 ft
CRMN37MM-10	Reversible Hardware Molded Cable, DB37 Male / Male, 10.0 ft
CRMN37MM-15	Reversible Hardware Molded Cable, DB37 Male / Male, 15.0 ft
CRMN37MM-25	Reversible Hardware Molded Cable, DB37 Male / Male, 25.0 ft
CRMN37MF-2.5	Reversible Hardware Molded Cable, DB37 Male / Female, 2.5 ft
CRMN37MF-5	Reversible Hardware Molded Cable, DB37 Male / Female, 5.0 ft
CRMN37MF-10	Reversible Hardware Molded Cable, DB37 Male / Female, 10.0 ft
CRMN37MF-15	Reversible Hardware Molded Cable, DB37 Male / Female, 15.0 ft
CRMN37MF-25	Reversible Hardware Molded Cable, DB37 Male / Female, 25.0 ft
CRMN37FF-2.5	Reversible Hardware Molded Cable, DB37 Female / Female, 2.5 ft
CRMN37FF-5	Reversible Hardware Molded Cable, DB37 Female / Female, 5.0 ft
CRMN37FF-10	Reversible Hardware Molded Cable, DB37 Female / Female, 10.0 ft
CRMN37FF-15	Reversible Hardware Molded Cable, DB37 Female / Female, 15.0 ft
CRMN37FF-25	Reversible Hardware Molded Cable, DB37 Female / Female, 25.0 ft



Recommended panel openings for rear mounted D-Sub adapters



PANEL MOUNTING DIMENSIONS (shown in inches)			
CONTACTS	DIM. A	DIM. B	DIM. C
DB9 or HD15	0.984	0.806	.449
DB15 or HD26	1.312	1.134	.449
DB25 or HD44	1.852	1.684	.449
DB37 or HD62	2.500	2.326	.449
DB50 or HD78	2.406	2.218	.555